

Security Seal · Data Sheet

# Mega Cable Lock 250

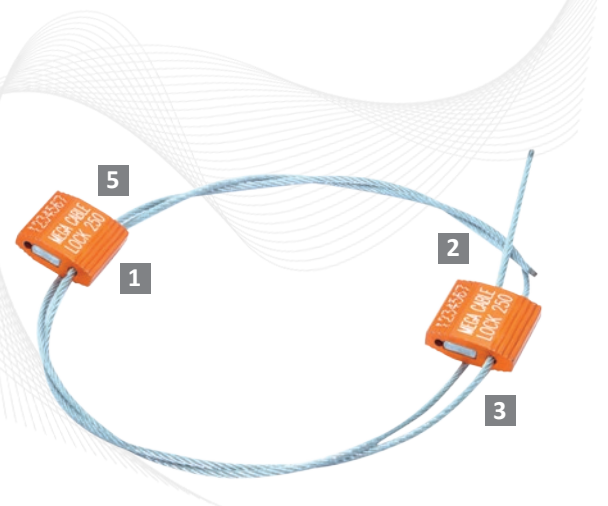
## Double Security Barrier Seal

**ISO 17712.2 Compliant · C-TPAT Compliant**

The Mega Cable Lock is user-friendly and highly tamper-evident. It is available with different cable diameters to secure various applications with different security requirements.

The Mega Cable Lock consists of 2 Cable Lock seals for extra security. The seals are secured once the wire passes through the one-way locking mechanism. It must be adjusted to fit tightly to the application to maximize security and prevent tampering.

The Mega Cable Lock is widely used on trucks, tanker trucks, and air cargo containers, shipping containers, rail cars calibrators and valves across various industries.



## Features

- 1 The body is designed with a rib pattern, which protects markings during rough handling.
- 2 The Mega Cable Lock's one-way locking mechanism provides fast and easy sealing.
- 3 One end of the cable is permanently secured into the locking body.
- 4 The Mega Cable Lock is anodized in solid colours, which accommodates customized laser marking.
- 5 The seals are etched with permanent laser marking. Laser marking offers the highest level of security as it cannot be removed and replaced. The seal's two locking bodies can be etched with identical information or according to customer requirements.

## Technical Specifications

### PRODUCT

| Product Code | Material  | Cable Length   | Cable Diameter | Pull Strength | Marking Area                 | Max Marking Digits |
|--------------|---|----------------|----------------|---------------|------------------------------|--------------------|
| MCL 250      | <b>Body:</b> Aluminium<br><b>Cable:</b> Mild steel wire | 18mm_20mm_50mm | Ø 2.5 mm       | 400 kg        | <b>Body:</b> 20.0mm x 20.0mm | 14                 |

### INNER CARTON

| Product Code | Carton Quantity  | Dimensions mm | Weight kg/carton | Volume m <sup>3</sup> /carton | Standard Colours |
|--------------|--|---------------|------------------|-------------------------------|------------------|
| MCL 250      | <i>Carton size/ weight will vary according to customised cable lengths. Please contact us for details.</i> |               |                  |                               |                  |



**FMM EXCELLENCE AWARD 2012**  
QUEST FOR CONTINUOUS IMPROVEMENT  
BEST MANUFACTURER IN MALAYSIA IN 2012