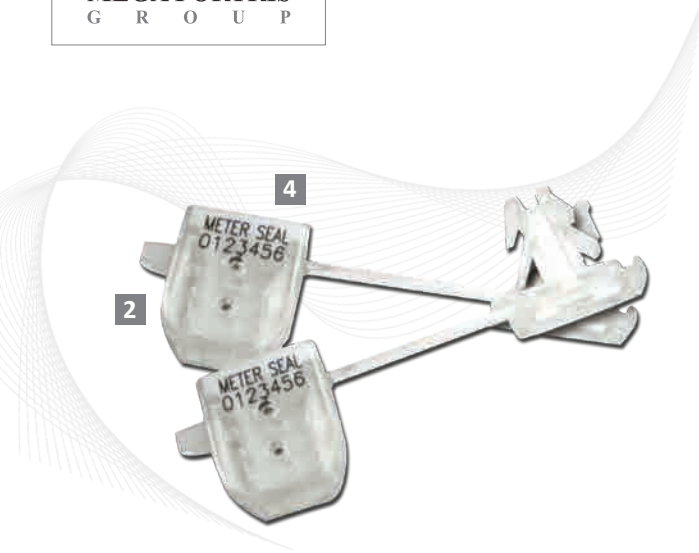


Indicative Seal · Data Sheet

# Meter Seal



## User-Friendly, Functional Meter Seal

Easily applied for use in securing various meters, the Meter Seal is designed for single use and is destroyed when opened. It cannot be easily opened once applied and requires a cutting plier for removal – this will leave tamper evidence once the seal has been opened.

The sturdy polycarbonate material can withstand exposure to sunlight and extreme weather conditions, making it an ideal security solution for meters whether they're indoors or outdoors.

Applications include: taxi meter, gas meter, electric meter, payphone, calibrations, valves and cash boxes.

### Features


- 1 The Meter Seal is easy to apply in just 3 steps: smooth wire insertion, anchor insertion into meter capsule, and finally the snapping of the anchor into place.
- 2 The seal's transparent body allows for quick inspections of the applied locking mechanism and provides clear evidence of tampering.
- 3 The polycarbonate body of the Meter Seal is sturdy withstands exposure to sunlight and extreme weather conditions.
- 4 Markings on the polycarbonate body include indicative text and serial numbers.

### Technical Specifications

#### PRODUCT

Product Code	Material	Wire Length	Wire Dimensions	Pull Strength	Marking Area	Max Marking Digits
MTR	<b>Body:</b> Polycarbonate <b>Wire:</b> Stainless steel, coated Galvanised, twisted	250.0 mm (std) / customised 250.0 mm (std) / customised	Ø 0.8 mm Ø 1.0 mm	16 kg (min)	12.0 x 5.0 mm	7

#### CARTON

Product Code	Quantity	Dimensions mm	Weight kg/carton	Volume m <sup>3</sup> /carton	Standard Colours
MTR	1,000 pcs	340 x 185 x 180 mm	1.64 kg	0.01132 m <sup>3</sup>	 and transparent



**FMM EXCELLENCE AWARD 2012**  
BEST MANUFACTURER IN MALAYSIA 2012