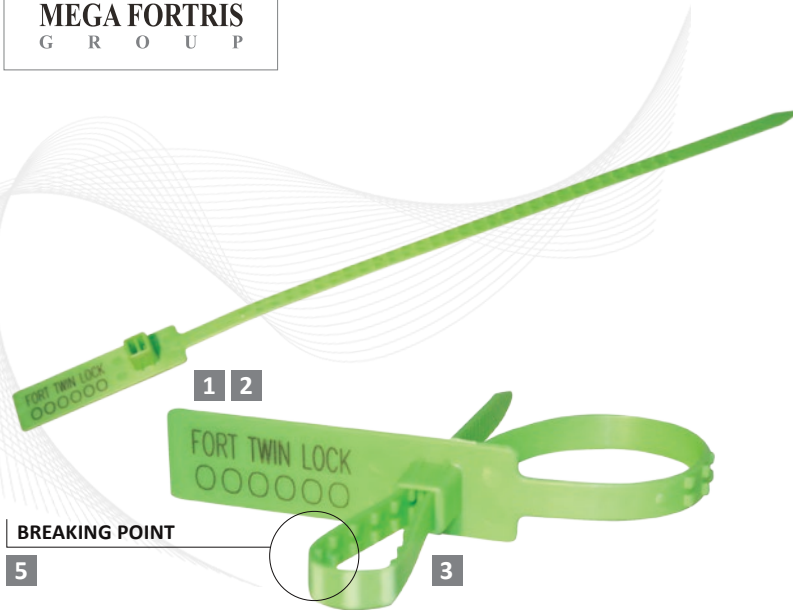


Indicative Seal · Data Sheet

Fort Twin Lock



Double-Locking Plastic, Pull-Tight Seal

A versatile pull-tight seal, the Fort Twin Lock is a strong seal despite its small dimensions. The innovative double-locking mechanism provides extra security when sealing.

Available in polypropylene (PP), the Fort Twin Lock seal is suitable for a variety of applications that focus on tagging such as sealing bags, documents, and goods-in-transit.

Features

- 1 The Fort Twin Lock seal is etched with permanent laser marking for security and easy identification.
Laser marking offers the highest level of security as it cannot be removed or replaced without showing clear signs of tampering.
- 2 The long marking flap allows for barcode markings, standard text, logos and alphanumeric serial numbers.
- 3 Includes a double-locking mechanism to provide additional security.
- 4 The durable PP securing strap gives the seal enough strength to match different user applications.
- 5 The breaking point is located at the strap's ribs, allowing for visible tamper evidence and easy removal upon application.

Technical Specifications

PRODUCT

Material	Locking Size / Total Length	Tensile Strength	Marking Area	Max Marking Digits
Polypropylene (PP)	327.5 x 6.8 x 1.1 mm (12.89 x 0.27 x 0.04 in)	18 kgf (39.7 lbf)	Flap: 14 x 35 mm (0.55 x 1.38 in)	Serial no: 10 Barcode: 8

OUTER CARTON

Carton Quantity	Dimensions	Weight kg/carton	Volume m ³ /carton	Standard Colours
1000 pcs	454 x 234 x 284 mm (17.87 x 9.21 x 11.18 in)	4.32 kgs (9.52 lbf)	0.03017 m ³ (1.06544 ft ³)	



FMM EXCELLENCE AWARD 2012
QUEST FOR CONTINUOUS IMPROVEMENT
BEST MANUFACTURER IN MALAYSIA IN 2012