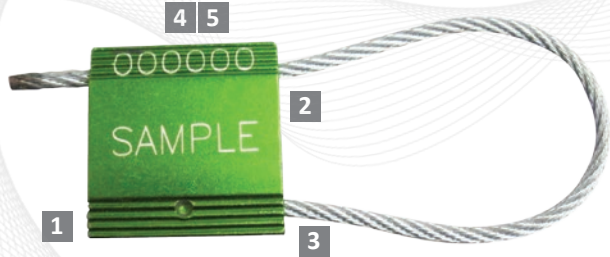




MEGA FORTRIS  
G R O U P

High Security Seal · Data Sheet

# Cable Lock 350



## Strong, Pull-Tight Barrier Seal

ISO 17712 "H" Compliant · C-TPAT Compliant

The Cable Lock 350 is user-friendly, highly tamper-evident, and is available with different cable lengths to secure various applications with different security requirements.

The Cable Lock 350 is secured as soon as the cable has passed through the one-way locking mechanism. The wire must be adjusted to fit tightly to the application to maximize security and prevent tampering.

A strong and versatile seal, it is used widely for securing trucks, tanker trucks, air cargo containers, shipping containers, rail cars, calibrators and valves.

## Features

- 1 The exterior of the Cable Lock 350 has been designed with a rib pattern, which protects markings during rough handling.
- 2 The one-way locking mechanism allows for quick and easy application and sealing.
- 3 One end of the cable is permanently secured into the locking body.
- 4 The Cable Lock 350 is anodised in solid colours for a base to print customised laser marking. Anodising also makes colour coding possible and allows for easy identification from a distance.
- 5 The seal is etched with permanent laser marking for company names, logos, sequential numbers and barcodes. Laser marking offers the highest level of security as it cannot be removed or replaced.

## Technical Specifications

### PRODUCT

Product Code	Material	Cable Length	Cable Diameter	Tensile Strength	Marking Area	Max Marking Digits
Cable Lock 350	<b>Body:</b> Aluminium body <b>Cable:</b> Galvanized steel wire	200.0 mm	Ø 3.5 mm	1200 kgs	<b>Body:</b> 30.0 x 30.0mm	15

### INNER CARTON

Product Code	Carton Quantity	Dimensions	Weight kg/carton	Volume m <sup>3</sup> /carton
--------------	-----------------	------------	------------------	-------------------------------

Cable Lock 350 *Carton size/ weight will vary according to customised cable lengths for this seal. Please contact us for additional details.*

### OUTER CARTON

Carton Quantity	Dimensions	Weight kg/carton	Volume m <sup>3</sup> /carton
-----------------	------------	------------------	-------------------------------

Standard Colours



**FMM EXCELLENCE AWARD 2012**  
QUEST FOR CONTINUOUS IMPROVEMENT  
BEST MANUFACTURER IN MALAYSIA IN 2012